

Anti RFP Monoclonal Antibody

Catalog No.	■	LT9993, 50ug, lyophilized with PBS, pH7.4
Description	■	Anti-RFP (Red Fluorescent Protein) Tag (RF5R) Monoclonal Antibody
Clonality	■	RF5R
Host Species Isotype	■	Mouse IgG1
Immunogen	■	RFP from the Discosoma sea anemone N-terminal peptide-KLH conjugates
Specificity	■	Recognizes native and denatured forms of RFP and its variants: TagRFP, TurboRFP, dsRed, mCherry, mOrange, tdTomato, etc
Sensitivity	■	WB (with ECL): 1-10ng of purified RFP or RFP fusion proteins
Purification	■	Protein A affinity chromatography from mouse ascites fluid
Application	■	Dot, ELISA, IP, IS, WB
Working Condition	■	WB (with ECL): 1:1000-3000 dilutions (incubate for 1 hour at room temperature) IS: 1:500-2000 dilution. For best results with other assays (e.g.: Dot, ELISA, etc), please determine optimal working dilution by titration test. Reconstitute the lyophilized antibody with deionized water (or equivalent) to a final concentration of 50ug/50ul.
Storage	■	Store at -20°C for up to 2 years. Centrifuge after first thaw to maximize product recovery. Aliquot to avoid repeated freeze-thaw cycles. Store aliquots at 4°C for 1-2 weeks

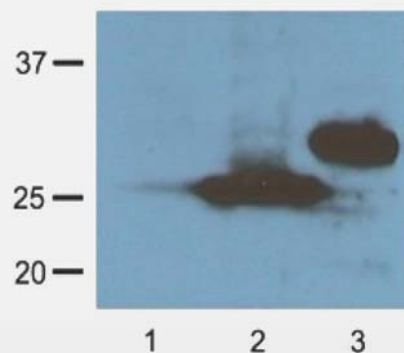


Fig. 1:1000 (1µg/mL) Ab dilution probed against HEK293 cells transfected with RFP vector; untransfected control (1), transfected with TurboRFP (2), and transfected with dsRed (3)